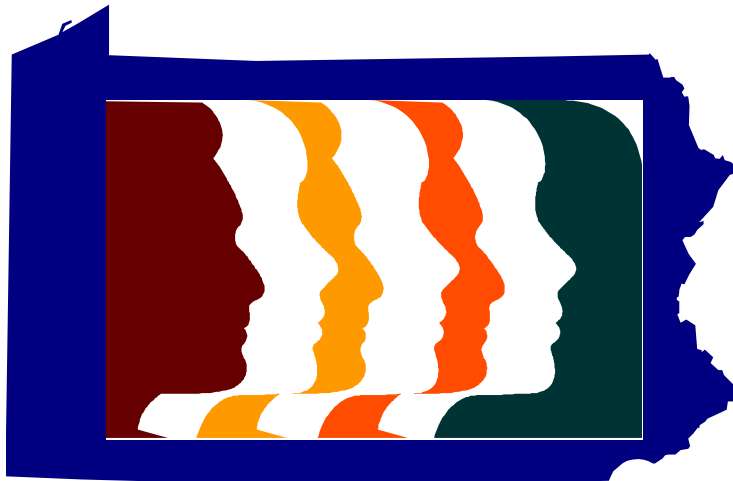


**DEPARTMENT OF PUBLIC WELFARE
OFFICE OF MENTAL RETARDATION**

1997-98 ANNUAL REPORT



TOM RIDGE
GOVERNOR
COMMONWEALTH OF PENNSYLVANIA

FEATHER O. HOUSTOUN
SECRETARY
DEPARTMENT OF PUBLIC WELFARE

NANCY R. THALER
DEPUTY SECRETARY
OFFICE OF MENTAL RETARDATION

OFFICE OF MENTAL RETARDATION

ANNUAL REPORT FISCAL YEAR 1997-98

INTRODUCTION

Fiscal Year 1997-98 saw the implementation of Pennsylvania's Multi-Year Plan, which includes the following major activities:

- ❖ Build community capacity,
- ❖ Increase consumer and family choice and control,
- ❖ Improve quality and accountability, and
- ❖ Manage resources more effectively.

The Fiscal Year 1997-98 budget initiatives included: \$1.5M to fund community homes for 44 people from Western Center; \$4.7M to fund community homes for 130 people from Laurelton Center; \$3.2M to fund community homes for 220 people from other State Centers; \$11.5M to support 817 people from community waiting lists; and \$1.6M to support 500 additional children in the Early Intervention Program. These initiatives continue respond to the desire of people residing in State Centers to live in the community and to the needs of individuals and families who are waiting for services.

BUILDING COMMUNITY CAPACITY

- ❖ **582 people from the waiting lists received services.**
This was made possible through the expansion of Medicaid Waiver funds of \$12.8 million on an annualized basis. Individuals in critical need and those with aging caregivers were given priority status for service.
- ❖ **339 Individuals living in Pennsylvania's State Mental Retardation Centers moved to new homes in the community.**
Embreeville Center closed in December 1997. Laurelton Center closed in July 1998.
- ❖ **Lowest admissions to state facilities:**
There was one (1) State Center admission in Fiscal Year 1997-1998. The community expansion and county efforts to create responsive and individualized community services for everyone has resulted in the lowest number of admissions to state facilities in the history of the program. State Center census at the end of Fiscal Year 1997-98 was 2,533.

INCREASING CHOICE AND CONTROL

- ❖ Two years ago, Pennsylvania was one of nineteen states that received a grant from the Robert Wood Johnson Foundation for the Pennsylvania System Change Project to promote the principles of **self-determination** in its service delivery system. This initiative is consistent with the Multi-Year Plan objective to increase consumer and family control. The Allegheny, Blair and Lehigh County Programs received grant funds to effect local systems reform in Fiscal Year 1997-98. Choice, control, freedom and responsibility are essential for individuals, along with the people they choose to support them, to determine how they will live their lives. Self-determination respects the rights of all people as they determine the course of their lives while offering them the supports needed to pursue their individual goals. Self-determination returns to the individual the control and responsibility for how public funds are spent and reaches beyond what public funding can offer as the general community is recognized as a resource.

IMPROVING QUALITY AND ACCOUNTABILITY

- ❖ Publication of "**A Guide To Supporting People Moving From State Centers Into The Community**" outlined the basic steps for planning and transitioning into the community. The Guide was distributed to consumers and family members at each State Center as well as to County MH/MR Program staff and provider agencies.
- ❖ **Transition teams** were established in each State Center to assist consumers, families, county programs and providers with the transition to the community
- ❖ The **Dual Diagnosis Training Initiative** reached over 2,800 people through the course "Unmasking Mood Disorders", Positive Approaches training, and individual consultations.
- ❖ **Mental Health Assessment Teams** were established at each State Center to improve services to residents with mental illness.
- ❖ Pennsylvania began participating in a national **Core Indicators** demonstration project to develop standard measures of performance for state developmental disabilities systems. The standardized measures are intended to assist states in measuring and tracking performance and outcomes internally and across states. Pennsylvania was selected as one of the pilot sites to collect information based on the indicators in a sample of county programs in Fiscal Year 1998-99 as part of Phase I of the national project.

MANAGING RESOURCES MORE EFFECTIVELY

- ❖ A workgroup was established to develop **agreements with county programs** to increase accountability for services and funding to promote a higher degree of quality in the delivery of services.
- ❖ As part of the Multi-Year Planning process, the Office committed to continuing its efforts to reduce the **community waiting list**. The Office, through the Institute on Disabilities, Temple University, conducted a study of the waiting list in two phases.

Phase I was an analysis of the waiting list as currently defined and managed by county programs. The findings from Phase I are:

1. There was no consistency within regions or between counties in how data are collected for the waiting list;
2. In most counties the waiting list is reviewed periodically (at least quarterly and in some counties monthly) to reassess the needs of the people on the waiting list;
3. The potential demand for service in a given year is larger than had been initially estimated by only looking at the number of people on the waiting list;
4. There appears to be no consistent approach to how counties serve people from the waiting list versus those individuals who receive services but are not on the waiting list;
5. For those people who came into service during 1995-96 who were on the waiting list, a large proportion were already receiving some service;
6. For those people who came into service during 1995-96 who were not on the waiting list, the services tended to be new rather than enhanced services;
7. The numbers and percent of people who requested supports and who received supports are very similar; and
8. The services requested most frequently include; Family Support Services, Competitive/Supported Employment, Community residential, Vocational Rehabilitation, and Adult Developmental Training.

Phase II will develop standardized definitions of waiting list categories and data elements to be used by all county programs. Data collected through the new standardized process will support a budgetary and resource allocation process that better meets the needs of individuals on the community waiting lists.

- ❖ As a direct result of the Multi-Year Plan, a workgroup was formed to address **unified funding and elimination of categoricals** within the mental retardation system.

EARLY INTERVENTION SERVICES

During Fiscal Year 1997-1998, 13,475 children in Pennsylvania and their families received early intervention services and supports. The Early Intervention Program recognizes the family as the child's greatest resource and supports the family in its routines in the home and in the community.

The Department of Public Welfare, through the Office of Mental Retardation, has been a state lead agency in the delivery of early intervention services for over 25 years. Services are administered through the 45 County Mental Health/Mental Retardation Programs. The Department of Public Welfare as the lead agency is responsible to develop and to maintain a statewide early intervention system for infants and toddlers from birth to age three and their families under Public Law 102-119, Part C, the Individuals with Disabilities Education Act. Pennsylvania Act 212-1990 was enacted to parallel the federal legislation and establish an entitlement program for infants, toddlers and preschool children.

Early intervention in Pennsylvania is a process that promotes collaboration among parents, service providers and others significantly involved with young children who have a disability, developmental delay or who are at risk of developmental delay. It enhances family/caregiver relationships with children, building on their strengths, and strives to maximize the experiences, opportunities and resources within the routines and activities unique to each family and community. Early intervention has as its cornerstones those philosophies that promote: families' independence and competencies; respect of families' strengths, values and diversities; and supports and services for children in places where they would be if they did not have a disability.

Funding for early intervention services is generated from a variety of resources, using county, state and federal funds in addition to private insurance and community resources. During Fiscal Year 1997-1998, the Medical Assistance billing system, that encompasses some of the required early intervention services, generated revenues to the system. This funding stream is projected to continue to be a major source of reimbursement.

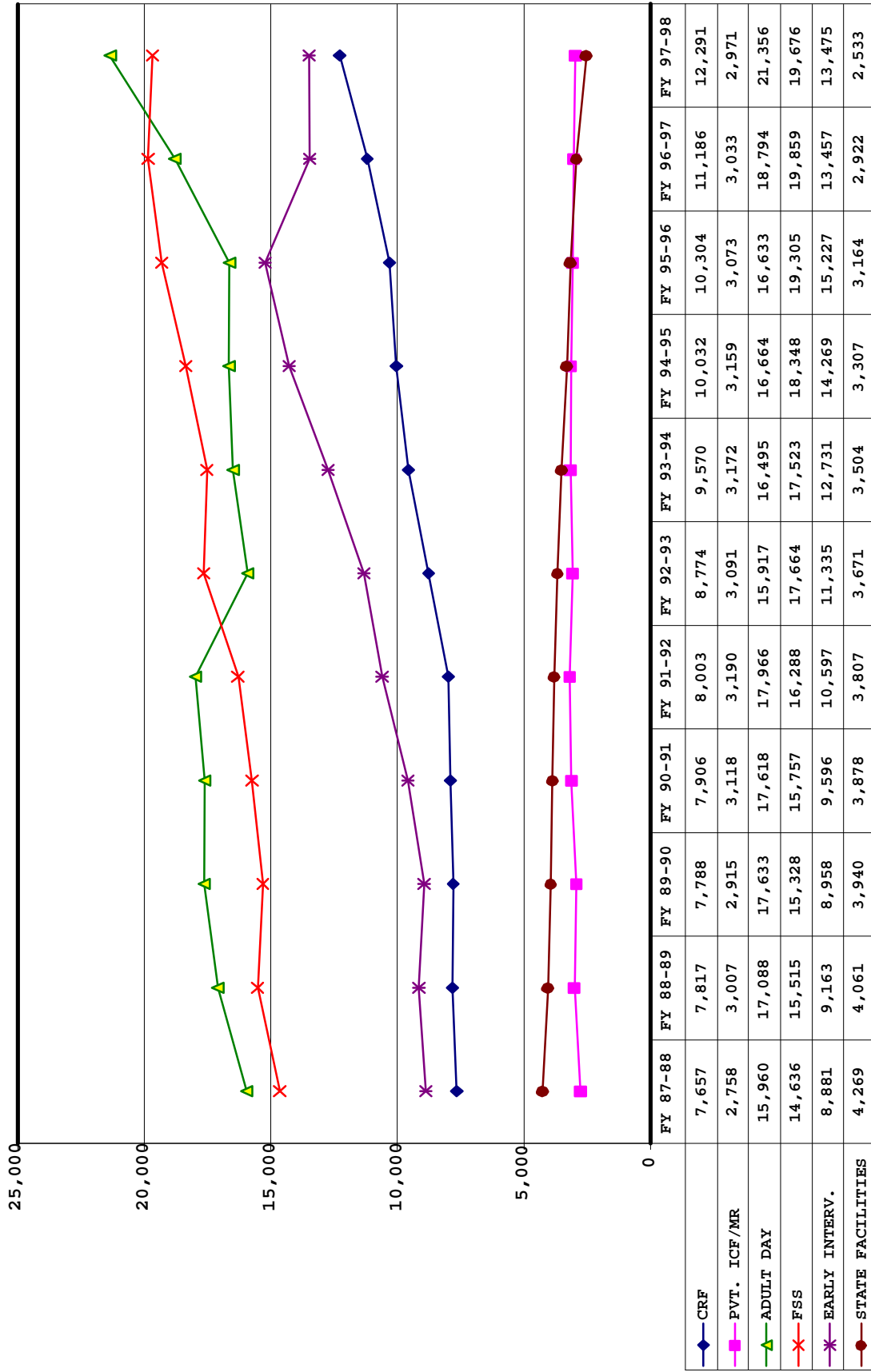
"Early Intervention in Pennsylvania", an annual report of early intervention services birth to age of beginner for Fiscal Year 1997-1998, was published by the state Early Intervention Coordination Council and is also available.

**OFFICE OF MENTAL RETARDATION
CENSUS BY PROGRAM
FY 1966 TO PRESENT**

FISCAL YEAR	STATE FACILITIES (1)	CRF (2)	PLF (3)	ADULT DAY (4)	FSS (5)	EARLY INTERVENTION (6)	COUNTY CASELOAD (7)	PRIVATE ICF (8)	STATE POPULATION (9)	TOTAL RESIDENTIAL (10)	RESIDENTIAL PER 100,000 POPULATION (11)
1965-66	13267		1152						11758870	14419	122.6223
1966-67	13470		1483						11721705	14953	127.5668
1967-68	13309		1554						11625373	14863	127.8497
1968-69	12972		1655						11602255	14627	126.0703
1969-70	12568		1671						11739534	14239	121.2910
1970-71	12434		1773						11800766	14207	120.3905
1971-72	12010		2042						11771200	14052	119.3761
1972-73	11798	544	2031						11730645	14373	122.5252
1973-74	11410	896	1665						11894400	13971	117.4586
1974-75	11310	1605	1633						11842000	14548	122.8509
1975-76	10776	2069	1610						11859700	14455	121.8834
1976-77	10269	2338	1584						11869230	14191	119.5613
1977-78	9621	2755	1462						11845689	13838	116.8189
1978-79	9031	3246	1368						11903478	13645	114.6304
1979-80	8054	3507	1150	6588	16237	3603	37837	1143	11838596	13854	117.0240
1980-81	7636	3747	1152	8606	15360	3466	38815	1211	11863895	13746	115.8641
1981-82	6843	4626	1426	8742	11504	6019	38917	1553	11880000	14448	121.6162
1982-83	6610	5584		8823	11548	6011	38146	1740	11870000	13934	117.3884
1983-84	6263	5775		9783	13273	7543	36904	1832	11894477	13870	116.6087
1984-85	5978	6239		12990	13675	8360	39765	1833	11900701	14050	118.0603
1985-86	5278	6692		14337	15189	8523	41932	2089	11911250	14059	118.0313
1986-87	4639	7181		15854	15200	8778	42680	2410	11910000	14230	119.4794
1987-88	4269	7657		15960	14636	8881	49530	2758	11920000	14684	123.1879
1988-89	4061	7817		17088	15515	9163	51332	3007	11953908	14885	124.5199
1989-90	3940	7788		17633	15328	8958	53268	2915	12040009	14643	121.6195
1990-91	3878	7906		17618	15757	9596	55339	3118	11881643	14902	125.4204
1991-92	3807	8003		17966	16288	10597	58953	3190	11881643	15000	126.2452
1992-93	3671	8774		15917	17664	11335	61787	3091	11961070	15536	129.8880
1993-94	3504	9570		16495	17523	12731	63185	3172	11961070	16246	135.8240
1994-95	3307	10032		16664	18348	14269*	67026	3159	12052410	16498	136.8855
1995-96	3164	10304		16633	19305	15227*	67826	3073	12052410	16541	137.2423
1996-97	2922	11186		18794	19859	13457	69338	3033	12052410	17141	142.2205
1997-98	2533	12291		21356	19676	13475	71571	2971	12052410	17795	

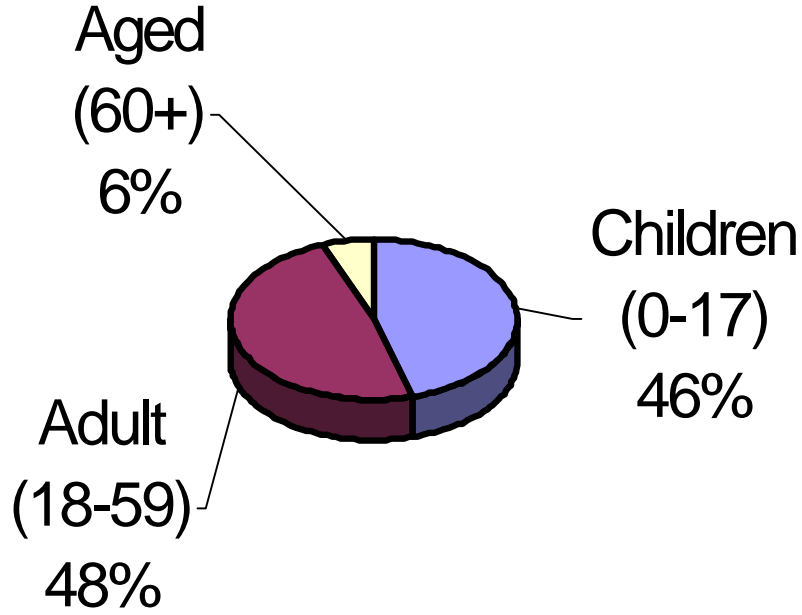
1. ON BOOKS AS OF LAST DAY OF FISCAL YEAR
2. POPULATION AS OF LAST DAY OF FISCAL YEAR (CRF)
3. POPULATION AS OF LAST DAY OF FISCAL YEAR (CCR)
4. POPULATION AS OF LAST DAY OF FISCAL YEAR (CCR)
5. POPULATION AS OF LAST DAY OF FISCAL YEAR (CCR)
6. PEOPLE SERVED DURING FISCAL YEAR (EIRS)
7. PEOPLE SERVED DURING FISCAL YEAR (CCR)
8. POPULATION AS OF LAST DAY OF FISCAL YEAR (CRF)
9. EST. STATE POPULATION JULY 1, 1991 (PA ST. DATA CNTR)
10. SUM OF COLUMNS 1, 2 & 8

OFFICE OF MENTAL RETARDATION
MR SERVICE TRENDS

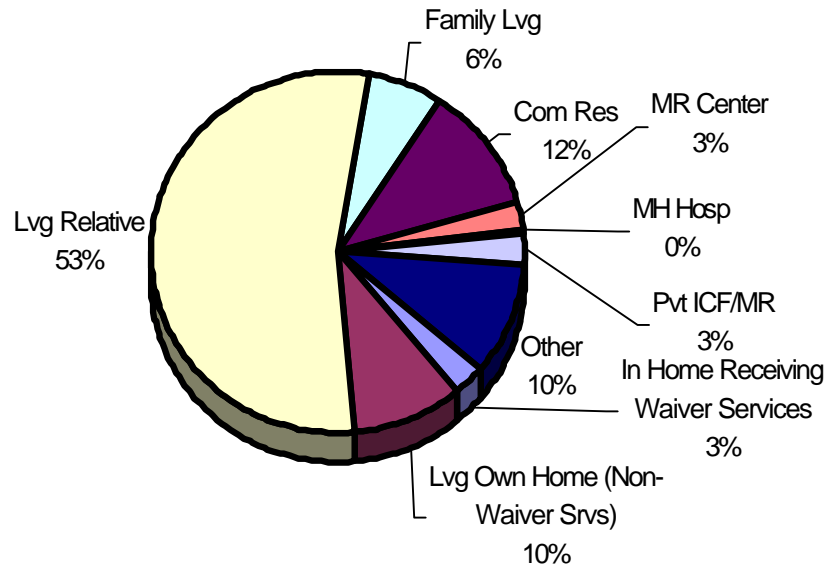


DEMOGRAPHICS OF PEOPLE SERVED

PEOPLE SERVED BY AGE GROUP



LIVING ARRANGEMENTS



**OFFICE OF MENTAL RETARDATION
NUMBER OF PERSONS BY TYPE OF SERVICE BY COUNTY
FISCAL YEAR 1997-98**

COUNTY	GENERAL POPULATION (1)	ST. MR. FAC CLIENTS (2)	COMMUNITY RESIDENTIAL (3)	PRIVATE ICF/MR (4)	RESIDENTIAL TOTAL (5)	ADULT DAY SERVICE (6)	FSS CLIENTS SERVED (7)	EARLY INTERVENTION (8)	NON-RESIDENT TOTAL (9)	CASELOAD SERVED (10)	CASELOAD END OF F. Y. (11)
BUCKS	567247	30	485	137	652	737	714	440	1,891	2,620	2,284
CHESTER	397314	14	357	81	452	568	555	456	1,579	1,750	1,512
DELAWARE	548368	74	546	275	895	767	552	445	1,764	2,859	2,565
MONTGOMERY	700317	49	774	148	971	1,150	903	659	2,712	2,841	2,801
PHILADELPHIA	1524247	311	1511	668	2,490	3,098	2,413	2275	7,786	11,509	11,238
BERKS	347630	55	400	34	489	546	687	375	1,608	2,006	1,744
BRADFORD/SULLIVAN	68145	9	77	14	100	132	104	57	293	458	371
CARBON/MONROE/PIKE	206,471	14	217	22	253	283	377	256	916	997	800
LACK/SUSQ/WAYNE	300653	52	369	116	537	581	553	335	1,469	2,080	1,910
LEHIGH	297882	57	308	48	413	263	507	449	1,219	1,194	1,189
LUZERNE/WYOMING	357085	101	302	55	458	830	756	399	1,985	1,966	1,839
NORTHAMPTON	255012	41	212	50	323	352	365	249	966	1,256	1,043
SCHUYLKILL	153354	54	151	19	224	276	239	135	650	750	640
TIOGA	41895	7	57	12	76	76	118	33	227	253	197
BEDFORD/SOMERSET	128016	32	121	12	165	346	127	142	615	729	605
BLAIR	131821	47	166	25	238	335	142	201	678	974	831
CAMBRIA	160732	63	192	12	267	233	227	174	631	851	690
CENTRE	129836	7	121	6	134	191	122	113	426	572	422
COL/MONT/SNYDER/JUNION	157113	45	213	7	265	252	345	180	777	894	864
CUMBERLAND/FERRY	247733	50	174	37	261	292	499	257	1,048	1,219	954
DAUPHIN	245561	37	333	56	426	403	426	486	1,435	1,969	2,106
FRANKLIN/FULTON	140261	14	81	3	98	193	126	127	446	634	522
HUNT/MIFFLIN/JUNIATA	112993	39	99	6	144	263	256	119	638	883	852
LANCASTER	442686	61	335	64	460	625	506	589	1,720	2,577	2,104
LEBANON	116419	13	81	26	120	205	214	91	510	537	458
LYCOMING/CLINTON	158376	19	171	24	214	357	150	164	671	929	774
NORTHUMBERLAND	95734	39	130	10	179	156	222	88	466	710	594
YORK/ADAMS	441,272	78	319	34	431	526	547	759	1,832	3,612	3,293
ALLEGHENY	1320708	480	1515	491	2,486	2,893	2,355	1044	6,292	8,332	7,776
ARMSTRONG/INDIANA	165,239	41	160	33	234	352	264	97	713	865	740
BEAVER	188299	54	188	55	297	304	176	125	605	776	705
BUTLER	161893	22	165	39	226	178	453	124	755	814	764
CAMERON/ELK/MCKEAN	89486	22	150	31	203	225	108	173	506	794	639
CLARION	42124	12	59	5	76	99	132	53	284	263	216
CLEARFIELD/JEFF	126013	57	106	5	168	154	198	232	584	913	843
CRAWFORD	87986	25	101	5	131	234	214	109	557	834	707
ERIE	280321	48	492	134	674	923	1,097	493	2,513	3,171	2,672
FAYETTE	146536	21	172	25	218	262	130	135	527	644	641
FOREST/WARREN	49874	20	81	2	103	109	101	87	297	397	335
LAWRENCE	96582	43	91	12	146	128	128	96	494	618	534
MERCER	122161	58	145	3	206	268	540	79	887	890	787
POTTER	17061	4	21	3	28	57	43	30	130	93	85
VENANGO	59212	53	56	3	112	169	82	53	304	453	409
WASHINGTON/GREENE	248291	78	196	71	345	358	148	211	717	823	776
WESTMORELAND	376451	83	291	53	427	607	496	281	1,384	1,262	1,238
TOTAL	12,052,410	2,533	12,291	2,971	17,795	21,356	19,676	13,475	54,507	71,571	65,069

1. ESTIMATED GENERAL POPULATION, JULY 1, 1991 (PA ST DATA CENTER)
2. ON BOOKS AS OF JUNE 30, 1998 (FACT)
3. POPULATION AS OF JUNE 30, 1998 (CRF)
4. POPULATION AS OF JUNE 30, 1998 (CRF)
5. SUM OF COLUMNS 2, 3, & 4
6. CLIENTS SERVED AS OF JUNE 30, 1998 (CCR-257)
7. CLIENTS SERVED AS OF JUNE 30, 1998 (CCR-256)
8. CLIENTS SERVED AS OF JUNE 30, 1998 (EIRS)
9. SUM OF COLUMNS 6, 7 & 8 (NUMBER MAY BE DUPLICATIVE)
10. CLIENTS AT THE BEGINNING OF THE FY PLUS ADMISSIONS AND UNDROP. READMISS. FROM PREVIOUS FY
11. CLIENTS AS OF JUNE 30, 1998 (CCR-252)

OFFICE OF MENTAL RETARDATION
Community Residential Facilities Program
FISCAL YEAR
1997-1998

COUNTY/JOINDER	SUPERVISED LIVING					TOTAL	FAMILY LIVING	SEMI-INDEP. LIVING	MINIMAL SUPER-VISION	HOME BASED WAIVER	COMMUNITY RESIDENTIAL TOTAL	TOTAL WAIVER FUNDED
	BY NUMBER OF PERSONS											
	1-3	3-8	9-16	17+	TOTAL							
BUCKS	122	130		20	272	26	8	14	165	485	360	
CHESTER	135	91	4	17	247	15	19	38	38	357	246	
DELAWARE	249	102	10	39	400	10	33	27	76	546	414	
MONTGOMERY	270	199	1	31	501	73	16	111	73	774	462	
PHILADELPHIA	1002	120	5	128	1255	108	41	67	40	1511	1296	
REGION TOTAL	1778	642	20	235	2675	232	117	257	392	3673	2778	
BERKS	157	51		5	213	35	1	84	67	400	269	
BRADFORD/SULLIVAN	7	17	1	7	32	14	3	19	9	77	34	
CARBON/MONROE/PIKE	55	37	2	1	95	23	3	29	67	217	165	
LACK/SUSQ/WAYNE	100	84	5	24	213	15		54	87	369	242	
LEHIGH	90	36	1	4	131	49	8	33	87	308	253	
LUZERNE/WYOMING	86	51	2	2	141	23	17	62	59	302	181	
NORTHAMPTON	61	34	1	5	101	27		31	53	212	177	
SCHUYLKILL	31	36	1	2	70	1	5	22	53	151	123	
TIOGA	4	18		2	24	6	6	12	9	57	32	
REGION TOTAL	591	364	13	52	1020	193	43	346	491	2093	1476	
BEDFORD/SOMERSET	29			4	33	14	3	46	25	121	69	
BLAIR	78	17		2	97	19		14	36	166	123	
CAMBRIA	92	44			136	2	2	11	41	192	140	
CENTRE	37	25	2		64	4	18	24	11	121	62	
COLU/MON/SNY/UNION	68		3	1	72	15	3	72	51	213	143	
CUMBERLAND/PERRY	32	68	2	4	106	11	9	24	24	174	113	
DAUPHIN	88	52	1	6	147	54	18	65	49	333	244	
FRANKLIN/FULTON	22	12			34	35	3	6	3	81	62	
HUNT/MIFF/JUNIATA	37	11			48	8		8	35	99	91	
LANCASTER	138	77	2	8	225	15	20	33	42	335	246	
LEBANON	29	22		1	52	7		7	15	81	63	
LYCOMING/CLINTON	24	88			112	17	13	2	27	171	167	
NORTHUMBERLAND	55	15		5	75	25		10	20	130	107	
YORK/ADAMS	111	105	2	8	226	9	4	5	75	319	264	
REGION TOTAL	840	536	12	39	1427	235	93	327	454	2536	1894	
ALLEGHENY	630	214	12	32	888	69	223	65	270	1515	1253	
ARMSTRONG/INDIANA	43	66		2	111	6	1	12	30	160	125	
BEAVER	91	42		5	138	6	20	3	21	188	113	
BUTLER	69	15			84	24	10	3	44	165	100	
CAMERON/ELK/MCKEAN	30	57		3	90		3	33	24	150	94	
CLARION	14	21			35	3		3	18	59	45	
CLEARFIELD/JEFF	20	30		1	51	18		2	35	106	78	
CRAWFORD	26	5		1	32	41	2	6	20	101	96	
ERIE	37	173		3	213	10	4	81	184	492	404	
FAYETTE	96	33	1	3	133	9	2	9	19	172	105	
FOREST/WARREN	16	22	2		40			4	37	81	64	
LAWRENCE	43	19		1	63			1	27	91	80	
MERCER	37	46	1	1	85	34	4	11	11	145	79	
POTTER	5	6			11	5	3	1	1	21	19	
VENANGO	17	11		3	31	2	6	5	12	56	42	
WASHINGTON/GREEN	57	85		3	145	8	22	15	6	196	116	
WESTMORELAND	105	84		12	201	3	5	35	47	291	211	
REGION TOTAL	1336	929	16	70	2351	238	305	289	806	3989	3024	
TOTAL	4545	2471	61	396	7473	898	558	1219	2143	12291	9172	

OFFICE OF MENTAL RETARDATION
STATE CENTER RESIDENTS BY FACILITY AND COUNTY OF ORIGIN
AND PERCENT CHANGES FROM PREVIOUS FISCAL YEAR
FISCAL YEAR 1996-97

COUNTY	ALT	EBE	HAM	LAU	POLK	SEL	WES	WHI	CENTER TOTAL	MYR	FY 97-98 TOTAL	FY 96-97 TOTAL	% CHANGE
1BUCKS	0	8	9	0	0	8	0	5	30	0	30	31	-3%
2CHESTER	1	0	4	0	0	6	0	3	14	0	14	15	-7%
3DELAWARE	4	14	19	0	1	28	0	8	74	0	74	87	-15%
4MONTGOMERY	2	14	9	0	0	15	0	9	49	0	49	52	-6%
5PHILADELPHIA	20	84	52	0	0	87	0	68	311	0	311	358	-13%
TOTAL	27	120	93	0	1	144	0	93	478	0	478	543	-12%
6BERKS	0	0	46	0	0	7	0	2	55	0	55	67	-18%
7BRADFORD/SULLIVAN	0	0	0	0	0	4	0	5	9	0	9	13	-31%
8CARBON/MONROE/PIKE	0	0	1	0	0	0	0	13	14	0	14	20	-30%
9LACK/SUSQ/WAYNE	0	2	0	0	0	13	0	37	52	0	52	58	-10%
10LEHIGH	0	1	42	0	0	1	0	13	57	0	57	61	-7%
11LUZERNE/WYOMING	0	0	2	0	0	6	0	93	101	0	101	107	-6%
12NORTHAMPTON	0	2	31	0	0	1	0	7	41	0	41	47	-13%
13SCHUYLKILL	0	1	17	0	1	7	0	28	54	0	54	56	-4%
14TIOGA	0	0	0	0	0	2	0	5	7	0	7	7	0%
TOTAL	0	6	139	0	1	41	0	203	390	0	390	436	-11%
15BEDFORD/SOMERSET	13	15	2	0	1	1	0	0	32	0	32	32	0%
16BLAIR	20	17	0	0	6	4	0	0	47	0	47	56	-16%
17CAMBRIA	16	33	1	0	10	3	0	0	63	0	63	71	-11%
18CENTRE	1	1	0	1	1	3	0	0	7	0	7	16	-56%
19COL/MON/SNY/UNION	0	0	0	0	0	44	0	1	45	0	45	58	-22%
20CUMBERLAND/PERRY	2	1	2	0	1	42	0	2	50	0	50	54	-7%
21DAUPHIN	0	1	0	0	0	36	0	0	37	0	37	47	-21%
22FRANKLIN/FULTON	3	2	0	0	0	9	0	0	14	0	14	20	-30%
23HUNT/MIFF/JUNIATA	12	4	1	0	2	18	0	2	39	0	39	53	-26%
24LANCASTER	2	3	10	0	0	43	0	3	61	0	61	73	-16%
25LEBANON	0	0	1	0	0	12	0	0	13	0	13	17	-24%
26LYCOMING/CLINTON	4	2	2	0	2	9	0	0	19	0	19	29	-34%
27NORTHUMBERLAND	0	0	0	0	1	36	0	2	39	0	39	45	-13%
28YORK/ADAMS	2	5	5	0	2	63	0	1	78	0	78	103	-24%
TOTAL	75	84	24	1	26	323	0	11	544	0	544	674	-19%
29ALLEGHENY	17	66	11	0	181	91	65	7	438	42	480	533	-10%
30ARMSTRONG/INDIANA	3	10	0	0	27	1	0	0	41	0	41	50	-18%
31BEAVER	1	10	1	0	23	4	13	0	52	2	54	58	-7%
32BUTLER	3	3	0	0	14	0	1	0	21	1	22	24	-8%
33CAM/ELK/McKEAN	1	4	1	0	14	1	0	1	22	0	22	25	-12%
34CLARION	0	1	0	0	10	1	0	0	12	0	12	12	0%
35CLEARFIELD/JEFFERSON	4	3	0	0	42	8	0	0	57	0	57	60	-5%
36CRAWFORD	2	2	0	0	20	1	0	0	25	0	25	27	-7%
37ERIE	1	7	1	0	36	2	0	0	47	1	48	63	-24%
38FAYETTE	0	3	5	0	8	1	4	0	21	0	21	25	-16%
39FOREST/WARREN	2	1	0	0	17	0	0	0	20	0	20	20	0%
40LAWRENCE	1	3	0	0	38	1	0	0	43	0	43	53	-19%
41MERCER	0	4	0	0	53	1	0	0	58	0	58	62	-6%
42POTTER	1	0	0	0	2	1	0	0	4	0	4	4	0%
43VENANGO	0	1	0	0	50	0	0	0	51	2	53	60	-12%
44WASHINGTON/GREENE	4	10	3	0	19	9	28	0	73	5	78	86	-9%
45WESTMORELAND	3	41	0	0	23	6	8	0	81	2	83	107	-22%
TOTAL	43	169	22	0	577	128	119	8	1,066	55	1,121	1,269	-12%
FY 1997-98 TOTAL	145	379	278	1	605	636	119	315	2,478	55	2,533		
FY 1996-97 TOTAL	138	410	306	121	669	651	144	341	2,827	95	2,922		
% CHANGE	5%	-8%	-9%	-99%	-10%	-2%	-17%	-8%	-12%	-73%	-15%		

Office of Mental Retardation
Community Cost by County

County	Total	Residential	Non-Res
Bucks	\$33,856,889	\$23,516,372	\$10,340,517
Chester	\$30,817,021	\$19,943,088	\$10,873,933
Delaware	\$46,857,802	\$34,274,232	\$12,583,570
Montgomery	\$56,305,018	\$38,673,228	\$17,631,790
Philadelphia	\$179,926,660	\$116,188,232	\$63,738,428
Berks	\$21,811,202	\$14,640,863	\$7,170,339
Bradford Sullivan	\$2,940,084	\$1,892,228	\$1,047,856
Carbon Monroe Pike	\$9,371,334	\$5,657,250	\$3,714,084
Lackawanna Susquehanna Wayne	\$19,275,917	\$11,816,942	\$7,458,975
Lehigh	\$15,777,497	\$9,714,220	\$6,063,277
Luzerne Wyoming	\$16,336,268	\$9,303,902	\$7,032,366
Northampton	\$13,014,111	\$8,398,188	\$4,615,923
Schuylkill	\$8,012,633	\$4,944,847	\$3,067,786
Tioga	\$2,432,496	\$1,112,386	\$1,320,110
Bedford Somerset	\$26,719,041	\$22,820,803	\$3,898,238
Blair	\$9,493,067	\$5,831,707	\$3,661,360
Cambria	\$10,604,954	\$7,090,551	\$3,514,403
Centre	\$6,462,359	\$4,461,008	\$2,001,351
Columbia Montour Union Snyder	\$7,417,822	\$4,661,146	\$2,756,676
Cumberland Perry	\$9,980,890	\$5,835,758	\$4,145,132
Dauphin	\$20,622,987	\$14,299,647	\$6,323,340
Franklin Fulton	\$5,423,915	\$2,449,024	\$2,974,891
Huntingdon Mifflin Juniata	\$6,121,996	\$3,461,339	\$2,660,657
Lancaster	\$19,964,864	\$13,413,948	\$6,550,916
Lebanon	\$5,727,439	\$3,491,731	\$2,235,708
Lycoming Clinton	\$11,249,988	\$7,408,320	\$3,841,668
Northumberland	\$8,059,485	\$5,274,275	\$2,785,210
York Adams	\$18,909,002	\$11,984,258	\$6,924,744
Allegheny	\$116,902,822	\$77,144,183	\$39,758,639
Armstrong Indiana	\$9,019,895	\$6,288,732	\$2,731,163
Beaver	\$12,626,098	\$8,451,421	\$4,174,677
Butler	\$9,342,020	\$6,538,087	\$2,803,933
Cameron Elk McKean	\$7,036,913	\$4,205,057	\$2,831,856
Clarion	\$2,972,915	\$1,683,257	\$1,289,658
Clearfield Jefferson	\$6,325,173	\$3,849,133	\$2,476,040
Crawford	\$6,957,226	\$3,275,929	\$3,681,297
Erie	\$25,465,338	\$15,087,938	\$10,377,400
Fayette	\$10,407,574	\$7,057,975	\$3,349,599
Forest Warren	\$4,357,772	\$2,383,502	\$1,974,270
Lawrence	\$5,890,221	\$3,399,996	\$2,490,225
Mercer	\$9,636,864	\$5,493,842	\$4,143,022
Potter	\$1,149,284	\$549,482	\$599,802
Venango	\$3,108,067	\$1,796,546	\$1,311,521
Washington Greene	\$13,377,752	\$8,811,564	\$4,566,188
Westmoreland	\$20,630,700	\$12,778,369	\$7,852,331
Total	\$873,787,017	\$581,354,506	\$307,344,869

Office of Mental Retardation
Total Cost by County

County	Community Total	PRIVATE ICF/MR	ST. MR FAC CLIENTS	Grand Total
Bucks	\$33,856,889	\$11,230,127	\$3,594,997	\$48,682,012
Chester	\$30,817,021	\$6,639,710	\$1,677,665	\$39,134,396
Delaware	\$46,857,802	\$22,542,225	\$8,867,659	\$78,267,686
Montgomery	\$56,305,018	\$12,131,816	\$5,871,828	\$74,308,662
Philadelphia	\$179,926,660	\$54,757,113	\$37,268,134	\$271,951,907
Berks	\$21,811,202	\$2,787,039	\$6,590,828	\$31,189,068
Bradford Sullivan	\$2,940,084	\$1,147,604	\$1,078,499	\$5,166,187
Carbon Monroe Pike	\$9,371,334	\$1,803,378	\$1,677,665	\$12,852,377
Lackawanna Susquehanna	\$19,275,917	\$9,508,720	\$6,231,328	\$35,015,965
Wayne				
Lehigh	\$15,777,497	\$3,934,643	\$6,830,494	\$26,542,634
Luzerne Wyoming	\$16,336,268	\$4,508,445	\$12,103,156	\$32,947,869
Northampton	\$13,014,111	\$4,098,586	\$4,913,162	\$22,025,860
Schuylkill	\$8,012,633	\$1,557,463	\$6,470,994	\$16,041,090
Tioga	\$2,432,496	\$983,661	\$838,833	\$4,254,989
Bedford Somerset	\$26,719,041	\$983,661	\$3,834,663	\$31,537,365
Blair	\$9,493,067	\$2,049,293	\$5,632,162	\$17,174,522
Cambria	\$10,604,954	\$983,661	\$7,549,493	\$19,138,108
Centre	\$6,462,359	\$491,830	\$838,833	\$7,793,022
Columbia Montour Union Snyder	\$7,417,822	\$573,802	\$5,392,495	\$13,384,119
Cumberland Perry	\$9,980,890	\$3,032,954	\$5,991,661	\$19,005,505
Dauphin	\$20,622,987	\$4,590,417	\$4,433,829	\$29,647,233
Franklin Fulton	\$5,423,915	\$245,915	\$1,677,665	\$7,347,495
Huntingdon Mifflin Juniata	\$6,121,996	\$491,830	\$4,673,496	\$11,287,322
Lancaster	\$19,964,864	\$5,246,191	\$7,309,827	\$32,520,881
Lebanon	\$5,727,439	\$2,131,265	\$1,557,832	\$9,416,536
Lycoming Clinton	\$11,249,988	\$1,967,321	\$2,276,831	\$15,494,141
Northumberland	\$8,059,485	\$819,717	\$4,673,496	\$13,552,698
York Adams	\$18,909,002	\$2,787,039	\$9,346,992	\$31,043,033
Allegheny	\$116,902,822	\$40,248,118	\$57,519,950	\$214,670,889
Armstrong Indiana	\$9,019,895	\$2,705,067	\$4,913,162	\$16,638,124
Beaver	\$12,626,098	\$4,508,445	\$6,470,994	\$23,605,537
Butler	\$9,342,020	\$3,196,897	\$2,636,331	\$15,175,248
Cameron Elk McKean	\$7,036,913	\$2,541,124	\$2,636,331	\$12,214,368
Clarion	\$2,972,915	\$409,859	\$1,437,999	\$4,820,772
Clearfield Jefferson	\$6,325,173	\$409,859	\$6,830,494	\$13,565,526
Crawford	\$6,957,226	\$409,859	\$2,995,831	\$10,362,915
Erie	\$25,465,338	\$10,984,211	\$5,751,995	\$42,201,544
Fayette	\$10,407,574	\$2,049,293	\$2,516,498	\$14,973,365
Forest Warren	\$4,357,772	\$163,943	\$2,396,665	\$6,918,380
Lawrence	\$5,890,221	\$983,661	\$5,152,829	\$12,026,711
Mercer	\$9,636,864	\$245,915	\$6,950,327	\$16,833,106
Potter	\$1,149,284	\$245,915	\$479,333	\$1,874,532
Venango	\$3,108,067	\$245,915	\$6,351,161	\$9,705,143
Washington Greene	\$13,377,752	\$5,819,993	\$9,346,992	\$28,544,736
Westmoreland	\$20,630,700	\$4,344,502	\$9,946,158	\$34,921,359
Total	\$873,787,017	\$4,344,502	\$303,537,567	\$1,435,774,942

**PA LICENSING STATISTICS
OFFICE OF MENTAL RETARDATION**

<u>Adult Training Facilities</u>	<u>March 1998</u>	<u>January 1999</u>
Total Number of licensed facilities	206	203
Total licensed capacity	10,864	10,716
 <u>Vocational Facilities</u>		
Total number of licensed facilities	179	176
Total licensed capacity	19,253	19,343
 <u>Large (serving 9 or more) Community Homes</u>		
Total number of licensed facilities	77	74
Total licensed capacity	2000	1869
 <u>Community Home Agencies (operating homes serving 8 or fewer Individuals)</u>		
Total number of licensed agencies	198	205
Total number of licensed facilities	2,328	2,492
Total licensed capacity	9,010	9,653
 <u>Family Living Homes</u>		
Total number of licensed agencies	80	81
Total number of licensed facilities	621	683
Total licensed capacity	905	1,005
 <u>Intermediate Care Facilities for the Mentally Retarded</u>		
Total number of licensed private ICF/MR facilities	249	230
Total number of state operated ICF/MR facilities	10	8
Total licensed capacity of Private ICFs/MR	2,955	2,971
Total licensed capacity of state Operated ICF/MR facilities	3,851	2,553